

# ASSEMBLY AND WELDING TABLES FROM COMPOSING PLATES

**SLOT**  
**STOL**



MADE IN RUSSIA

☎ 8(495) 108 29 74 multichannel

@ sale@slot-stol.ru

🌐 www.slot-stol.ru  
www.intertechpribor.ru

# MANUFACTURING

The company "SLOT-STOL" exists in the market for more than 5 years.

- A wide range, quality and functionality of products can effectively compete with the recognized leaders in this area.
- Highly qualified specialists of the company are constantly improving the technology of manufacturing a standard product line, as well as design and manufacture equipment for individual orders.



# WHY CHOOSE **SLOT-STOL**



## **Range**

We offer a large size range of tables, various versions of their modifications, as well as all the necessary types of equipment.



## **Technology**

We apply advanced technological solutions and follow all the innovative ideas on the welding equipment market.



## **Individual approach**

We can manufacture tables and accessories for individual orders, taking into account the technological processes of customers.



## **Affordable prices**

Our prices are significantly lower than foreign counterparts and do not depend on the exchange rate.



## **Delivery**

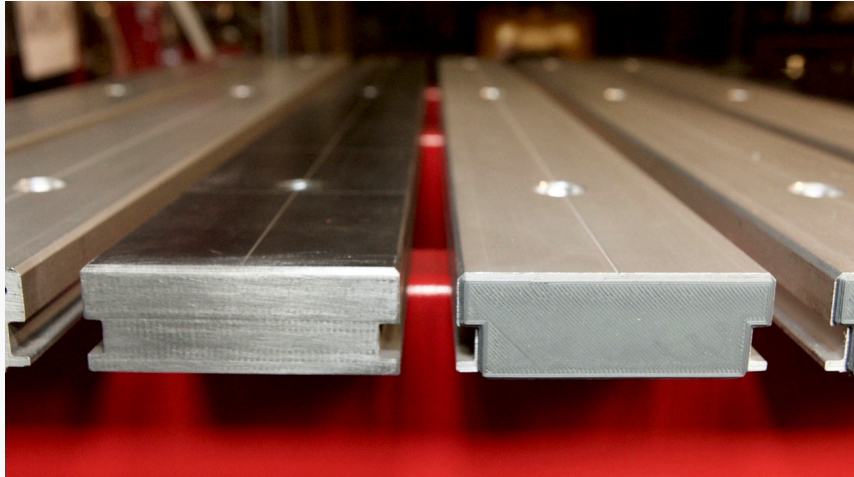
We deliver orders to all CIS countries from a warehouse in Moscow or in Kaliningrad.



## **Guarantees**

We provide warranty and service for all our products.

# ADVANTAGES OF DESIGN TABLES

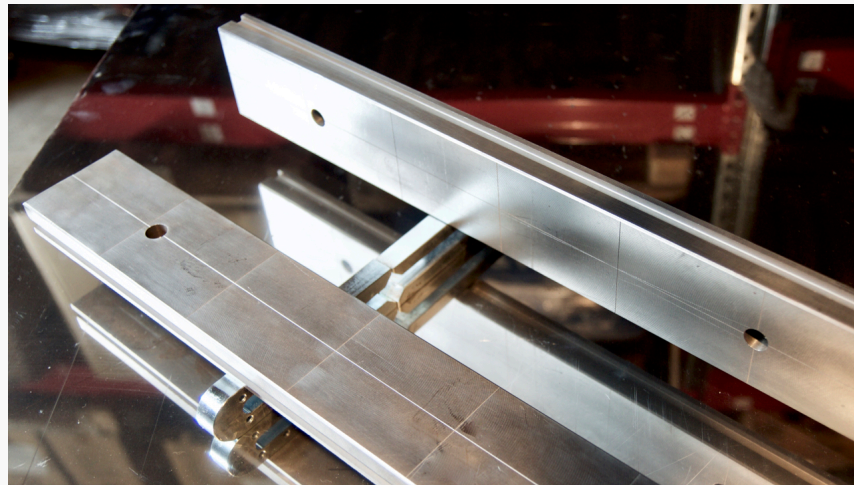


## Stacked plates

The working surface of composing plates makes it easy to transform it for the assembly of complex bulk structures.

## Materials used

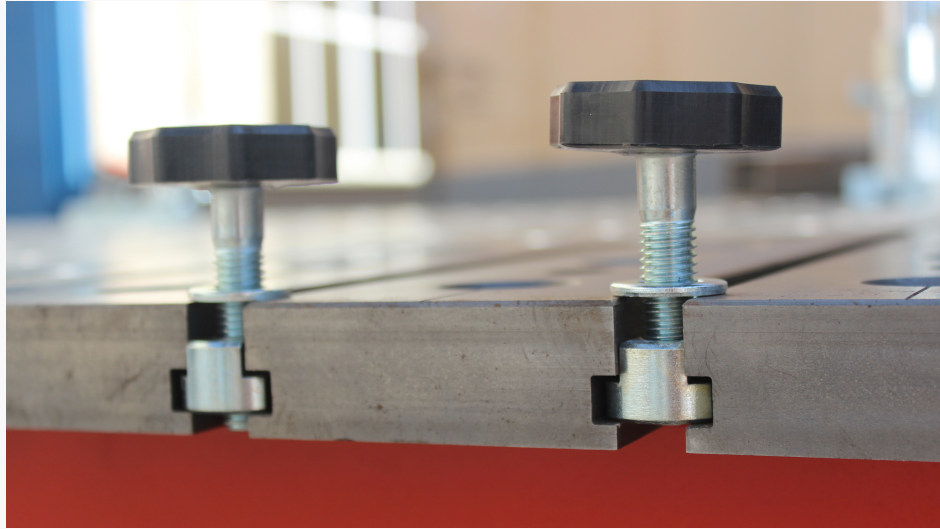
Used gray cast iron and aluminum profiles are less prone to scale and molten metal splashes.



## Mesh step and graving 100x100 mm

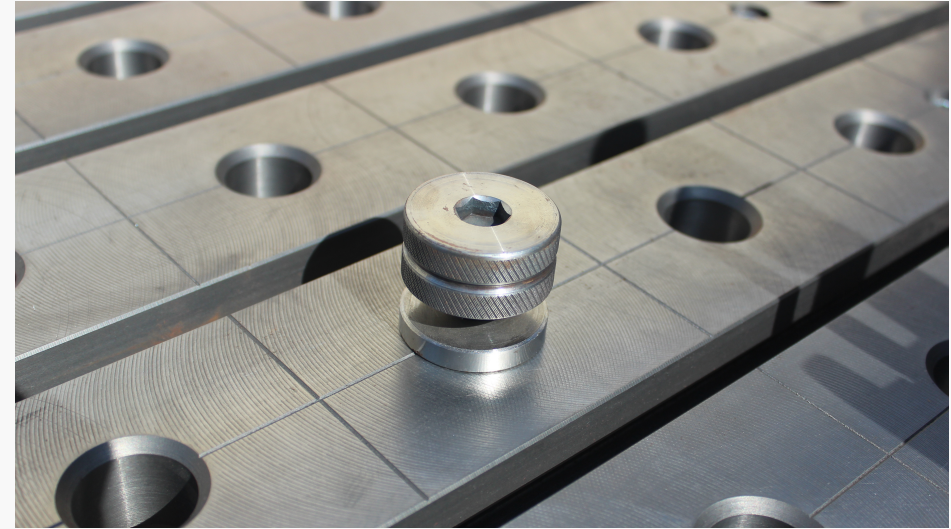
Grid 100 mm x 100 mm to determine the position and size when positioning parts.

# ADVANTAGES OF TABLE DESIGN



## T - Slot

T - Slot between the type plates of the table allow you to quickly set the snap-in, smoothly moving it to the exact position. The grooves are protected from dirt and scale.



## Perforation 28 mm

The holes are located on the table plates with a pitch of 100 mm. They make it possible to place the fixture with high precision and fix it with the help of quick-release bolts.

# ADVANTAGES OF DESIGN TABLES

## Size range of tables

Table sizes can vary in width and length from 725 mm to 3700 mm with one or two rows of plates. Production of tables in the special sizes is possible.



## Special modifications

Additional manipulators and modifications allow the use of tables in automated welding processes on mass production.

# ADVANTAGES OF DESIGN TABLE

## Fixing devices

More than 20 types of equipment allow you to fix any types of parts in 3-dimensional space. The equipment is made for fastening in the T-slot and fastening in the holes with a diameter of 28 mm. Production of equipment by the special order of the client is possible.



# OUR CLIENTS

FOR 5 YEARS OF PRODUCTION, OUR CUSTOMERS HAVE BECOME THE LARGEST ENTERPRISES FROM VARIOUS INDUSTRIES.





# Aluminum profile table

Assembly and welding tables made of aluminum anodized profile plates are the best solution for assembling metal structures of non-ferritic steels.

Plate type	anodized aluminum profile
Table type	stationary
Plate length	725 mm, 1000 mm, 1200 mm, 1500 mm
Plate thickness	30 mm
Plate processing accuracy	0,05 mm/m <sup>2</sup>
Table load capacity	500 kg/m <sup>2</sup>
The deviation from the flatness of the table	0,5 mm/m <sup>2</sup>
Clamping attachment system	T-slot
Work surface width	from 725 mm to 3700 mm
Table height	810 mm



# Cast-iron table with 28 mm holes

Assembly and welding tables from a set of plates of gray cast iron - the best solution for the assembly of metal structures.

Plate type	gray cast iron GG 25
Table type	stationary
Plate length	725 mm, 1000 mm, 1200 mm, 1500 mm
Plate thickness	30 mm
Plate processing accuracy	0,05 mm/m <sup>2</sup>
Table load capacity	3000 kg/m <sup>2</sup>
The deviation from the flatness of the table	0,5 mm/m <sup>2</sup>
Clamping attachment system	T-slot and hole system D28 mm
Grid size	100 x 100 mm
Work surface width	from 725 mm to 3700 mm
Table height	810 mm



# Table on the track

Assembly and welding tables on the rail to work with large metal structures.

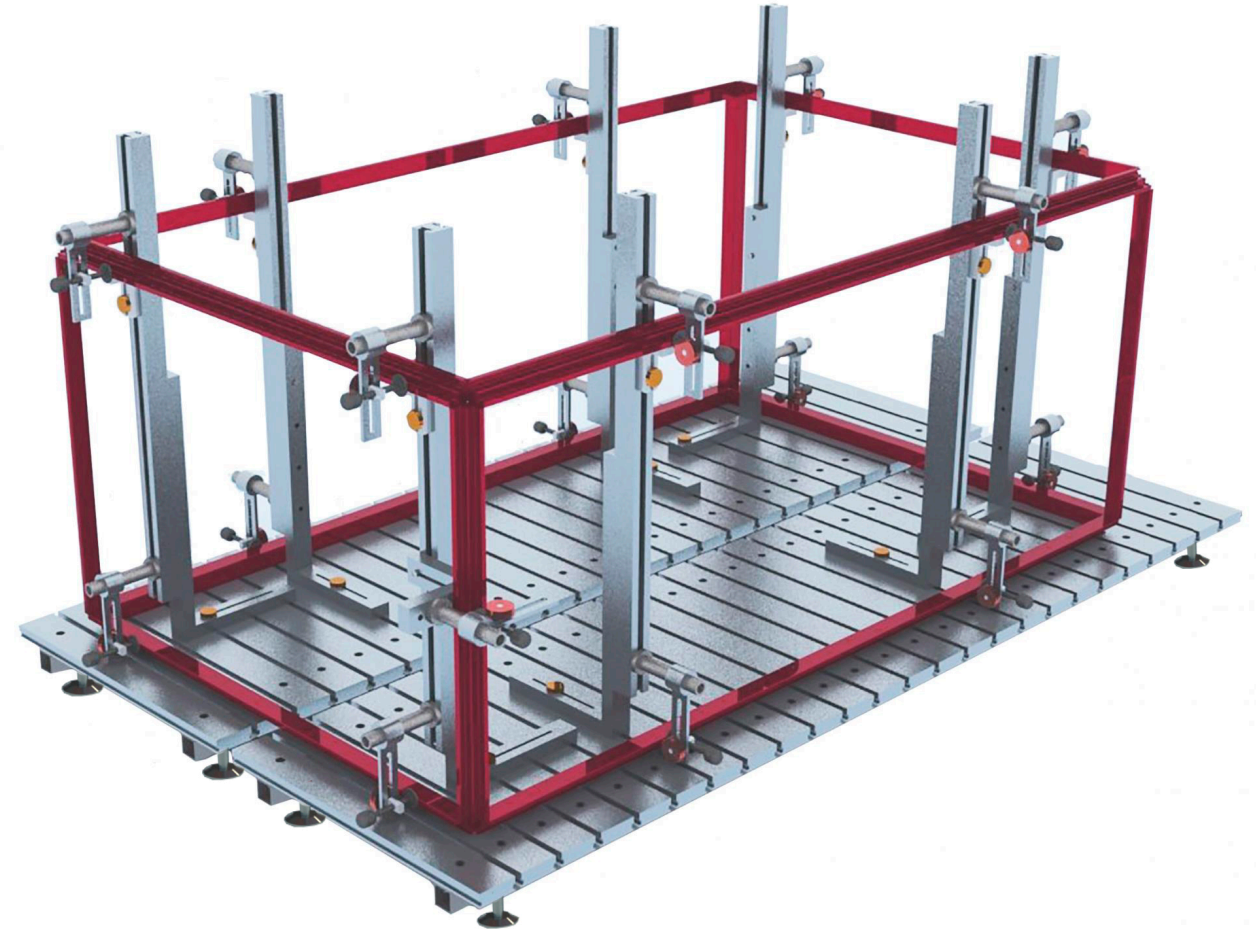
Table type	rail
Plate type	aluminum profile, gray cast iron GG25
Clamping attachment system	T-slot and hole system D28 mm
The deviation from the flatness of the table	0,5 mm/m <sup>2</sup>
Track length	от 1000 mm
Work surface width	от 1000 mm
Working surface length	от 725 mm
Table height	810 mm
Rail Track Accuracy	0,2 mm/m
Cast iron table capacity	1500 kg/m <sup>2</sup>
Aluminum table capacity	500 kg/m <sup>2</sup>



# Universal assembly and welding plate

Mounting plates of composing plates improves the performance of the assembly of metal structures.

Table type	stationary
Plate type	aluminum profile, gray cast iron GG 25
Clamping attachment system	T-slot and hole system D28 mm
The deviation from the flatness of the table	0,5 mm/m <sup>2</sup>
Working surface length	from 1000 mm
Work surface width	from 725 mm
Table height	from 400 mm
Loading capacity of cast iron tables	1500 kg/m <sup>2</sup>
Loading capacity of aluminum tables	500 kg/m <sup>2</sup>
Gross weight of cast iron table	from 200 kg
Total weight of aluminum table	from 30 kg



# Lift table

Tables with a scissor hydraulic ram and tabletops made of diaphragm plates facilitate the work with heavy, overall products.

Table type	lifting
Plate type	aluminum profile, gray cast iron GG 25
Clamping attachment system	T-slot and hole system D28 mm
The deviation from the flatness of the table	0,5 mm/m <sup>2</sup>
Table height	500 – 1500 mm
Working surface length	from 725 mm
Work surface width	from 725 mm
Loading capacity of cast iron tables	from 1000 kg/m <sup>2</sup>
Loading capacity of aluminum tables	up to 500 kg/m <sup>2</sup>
Gross weight of cast iron table	from 300 kg
Total weight of aluminum table	from 100 kg



# Rotary table

Rotary tables are effectively used for assembly, welding, stripping blanks.

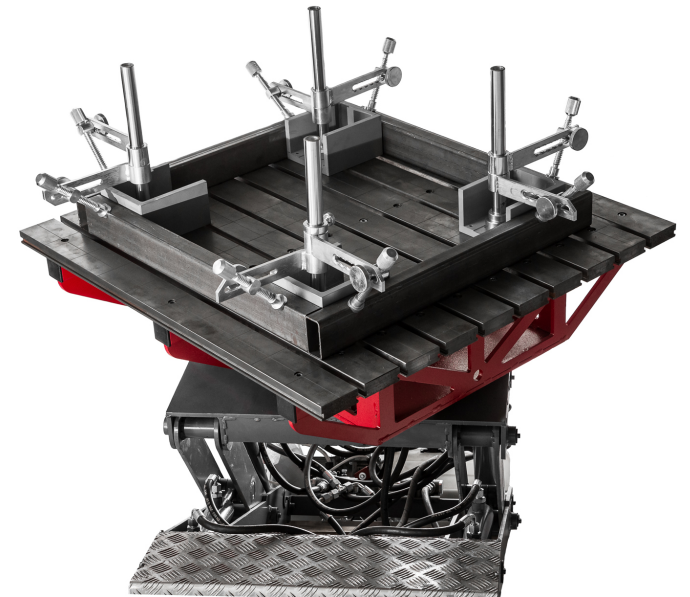
Table type	rotary
Plate type	aluminum profile, gray cast iron GG25
Clamping attachment system	T-slot and hole system D28 mm
Rotational speed	1-3 rpm (adjustment)
The deviation from the flatness of the table	0,5 mm/m <sup>2</sup>
Working surface length	from 1000 mm
Work surface width	from 725 mm
Table height	from 400 mm
Loading capacity of cast iron tables	from 1000 kg
Loading capacity of aluminum tables	Up to 500 кг
Gross weight of cast iron table	Up to 1000 кг
Total weight of aluminum table	Up to 500 кг
Power supply	3~400 V / 50 Hz



# Turn-and-tilt table

A table with hydraulic rotary drives, tilting and lifting the faceplate is required for automation

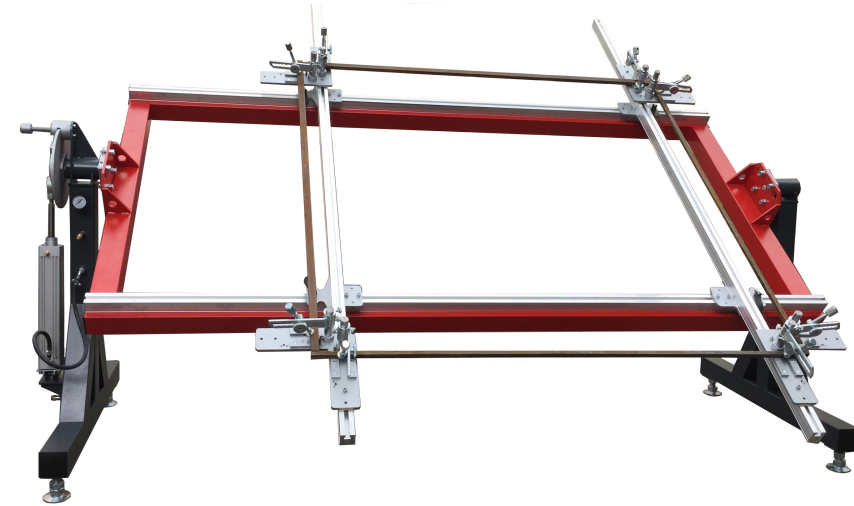
Table type	Turn-and-tilt
Plate type	aluminum profile, gray cast iron GG25
Clamping attachment system	T-slot and hole system D28 mm
The deviation from the flatness of the table	0,5 mm/m <sup>2</sup>
Type of drive	Hydraulic / electric
Torque	from 500 N-m
Tilt moment	from 1000 N-m
Tilt angle of faceplate	90°
Rotational speed	from 1.0 rpm (adjustment)
The length and width of the working surface	from 725 mm
Table height	600 - 1100 mm
Loading capacity of cast iron tables	from 1000 kg/m <sup>2</sup>
Loading capacity of aluminum tables	Up to 500 kg/m <sup>2</sup>
Power supply	3~400 V / 50 Hz
Power consumption	from 1 kW



# Conductor for welding frames

Rotary Conductor for welding frames allows you to quickly and accurately install a rectangular billet, set the length and width and convenient to weld it from all sides.

Conductor type	4100	4200	4300	4400
Frame size, m	3.0 x 1.5	3.0 x 1.5	3.0 x 2.0	3.0 x 2.5
load capacity, kg	50	100	100	100
Vertical turn range	360°	360°	225°	225°
Load balancing	-	pneumatic		
Brake mechanism	manual			

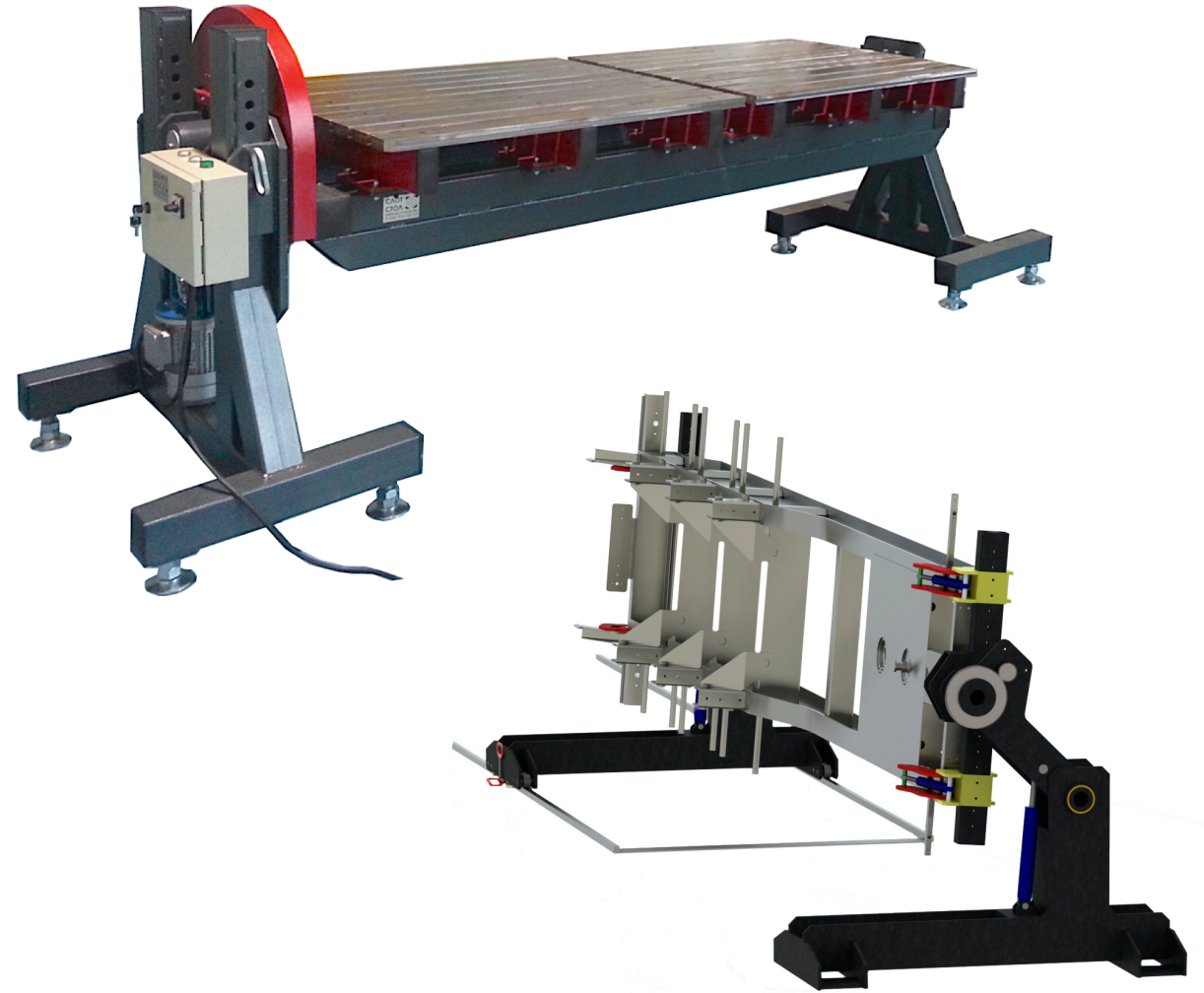




# Welding rotators

Rotary tables with a sloping plate of stacked plates are used for welding, stripping and other positioning of the blanks. Rotation of the surface is carried out at 360 °, which allows for circular welding of products.

Head and tail rotator is designed for assembling and welding large-sized parts (dump bodies, bus frames, trams) using a rotating mechanism for rotating the product around a horizontal axis.

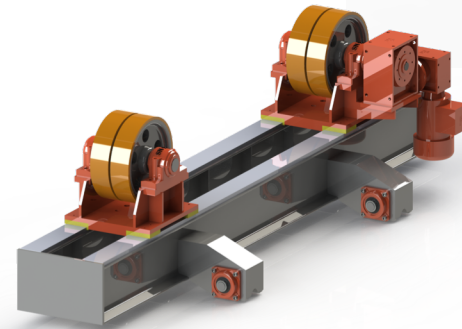


# Pipe rotators

Pipe rotators are designed to rotate pipe blanks 360 ° around their axis. They can also tilt the clamping section.

# Roller rotators

Roller rotators with sliding rollers are used for work with containers. Roller rotators are easily adjusted to the diameter of the product, can be mounted on rail carts.



# Telescopic welding console

The console is a very effective device in the work of the welder and the protection of connecting cables and hoses.

Three-arm welding console with a telescopic extension of 2 arrows, the total length of arrows is 5.8 meters.

The console can be mounted on a column or mounted on walls.

Convenient equipment of the workplace welder to reduce the complexity and improve productivity.

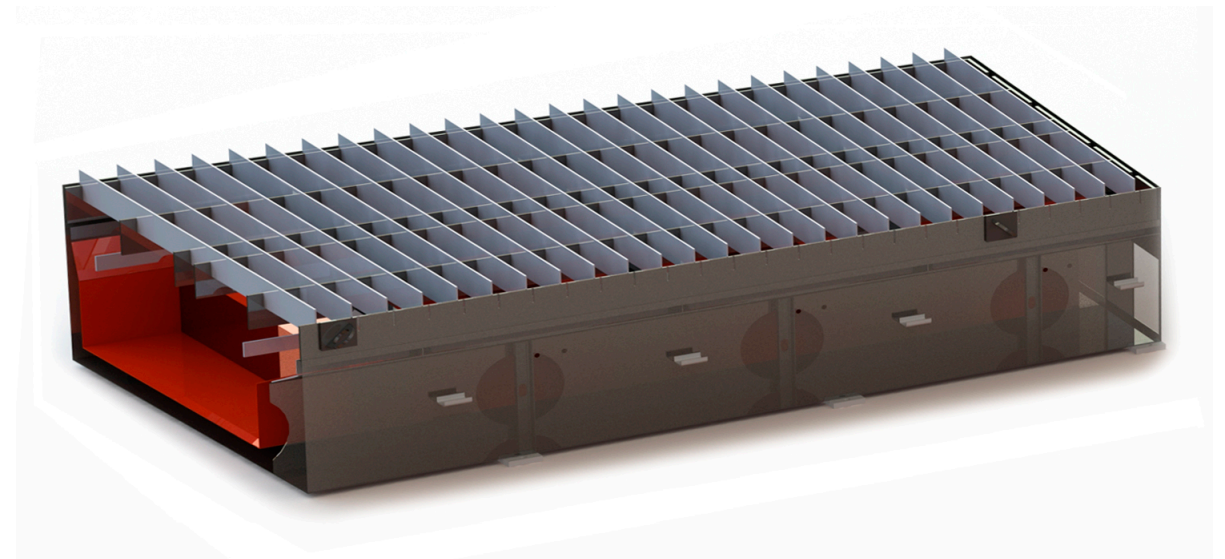
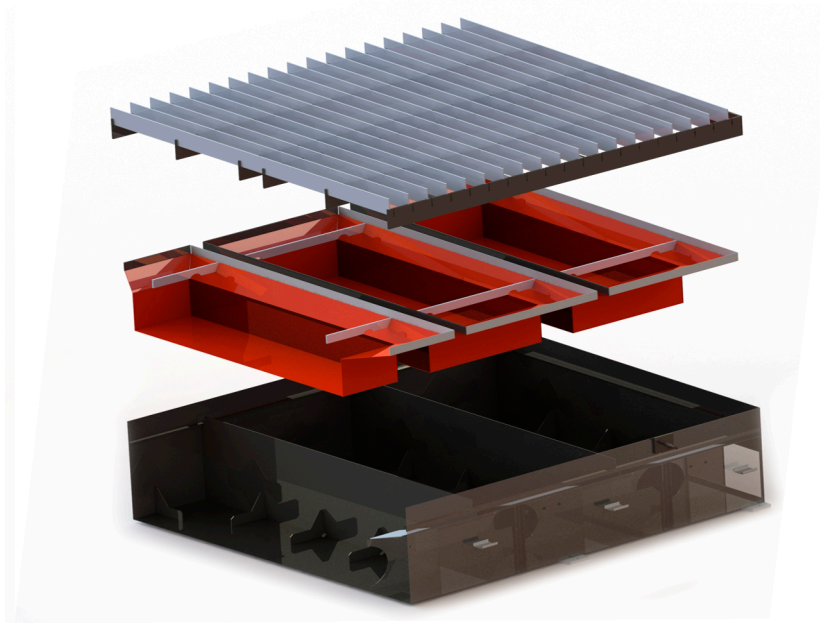


# Ventilated table

The ventilated table is a welded metal structure with air duct and valves that open up the section for ventilation. It is divided into sections of 760 mm width each, separated by partitions. The housing inserted into the bath, which serve to collect of solid waste generated in the process thermal cutting of metal.

Large dust collectors allow less clean table. The upper part of the module is a plate inserted vertically into the slots frame. The plates are used directly for placing them processed sheets.

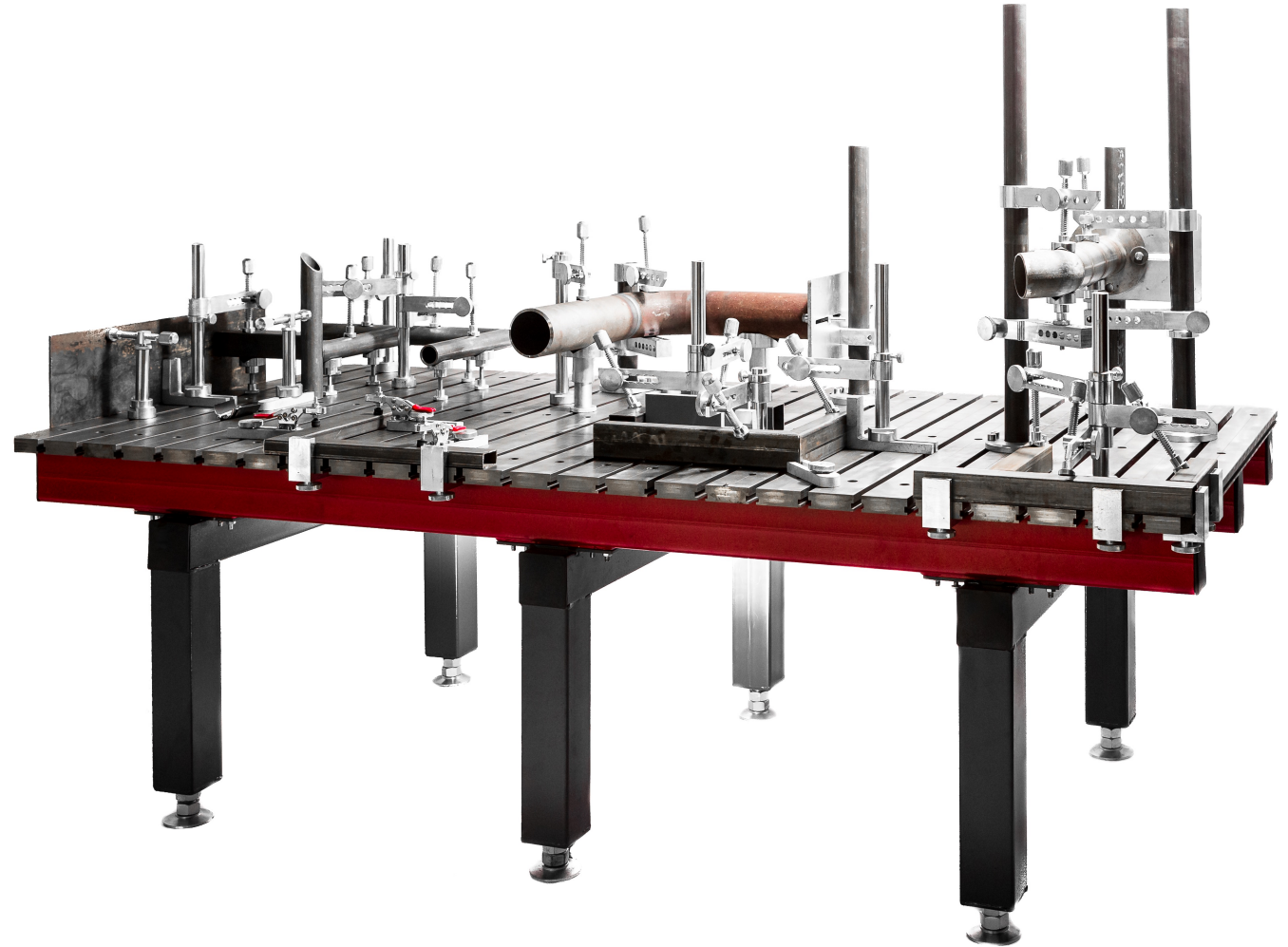
The weight of a standard table is 2000 x 3000 mm is 1500 kg.



# ASSEMBLY AND WELDING EQUIPMENT

Welding devices (accessories) ensure quick assembly of the structure, securely fix all the elements in the desired position and reduce the likelihood of deformation of the part during welding.

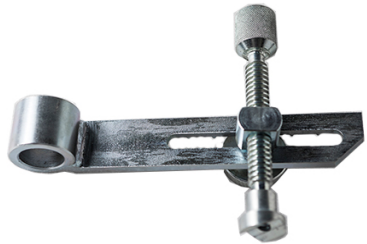
The use of equipment allows you to significantly improve the performance and quality of assembly work.



Horizontal clamp



Clamping lever 30 mm



Flat stop



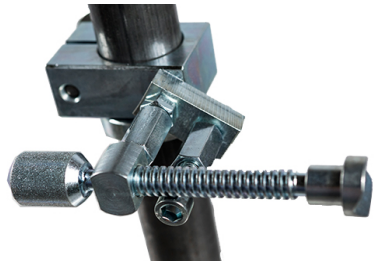
Vertical support  $\varnothing 30$  mm  
height is 150, 350, 550 mm



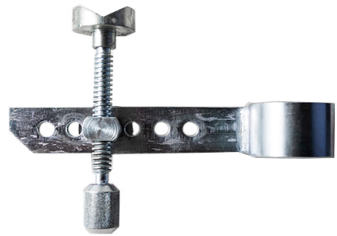
V-shaped support  $120^\circ$   
 $\varnothing 60$  mm,  $\varnothing 100$  mm



Horizontal clamp



Clamping lever 50 mm



Support arm 50 mm



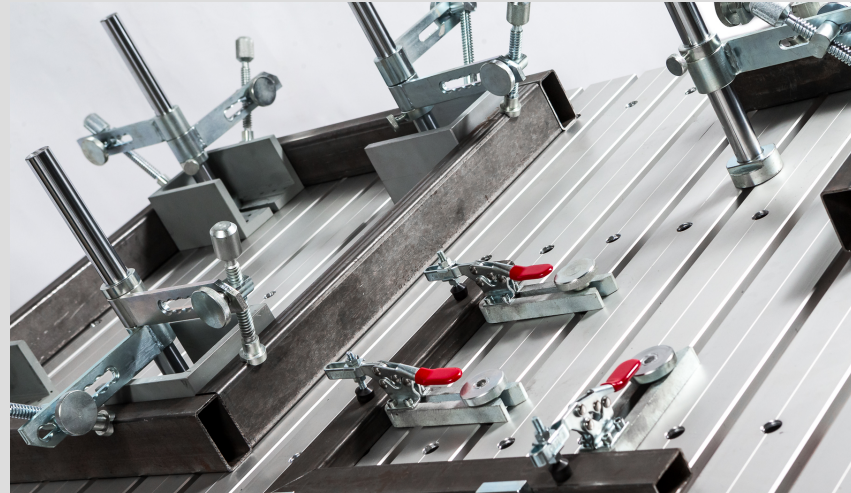
Vertical support  $\varnothing 50$  mm  
height is 300, 600, 900, 1200 mm



Flange clamp 600 mm



Quadrilateral support  
height is 100, 300 mm



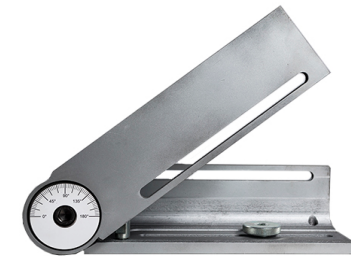
Horizontal clamp for vertical  
parts, 2  $\varnothing 30$  x 350 mm  
supports



High-speed clamp  
with flat stop



Adjustable angle stop  
350 x 350 mm

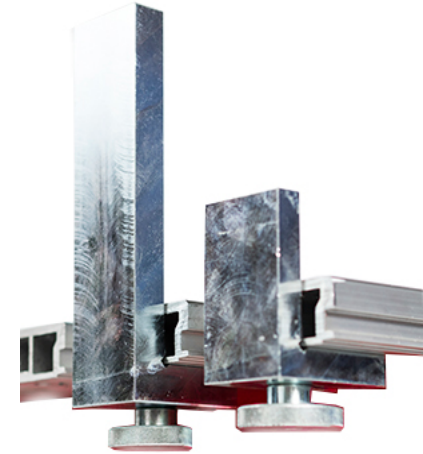




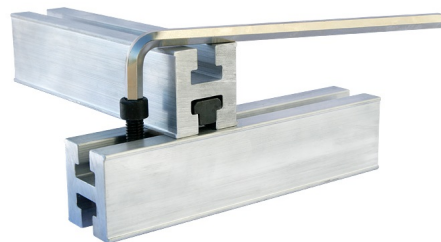
Clamp square  
600 x 350 mm



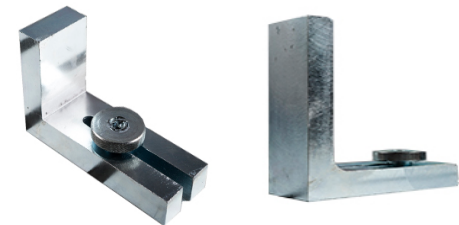
Angle stop  
height is 70 mm, 200 mm



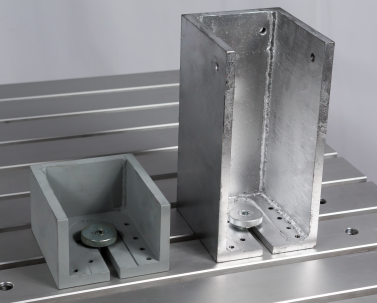
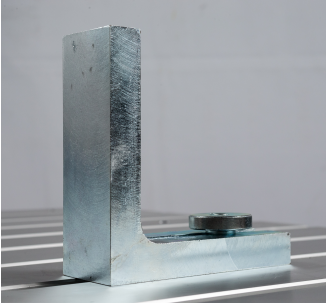
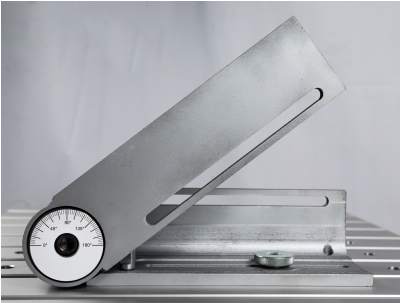
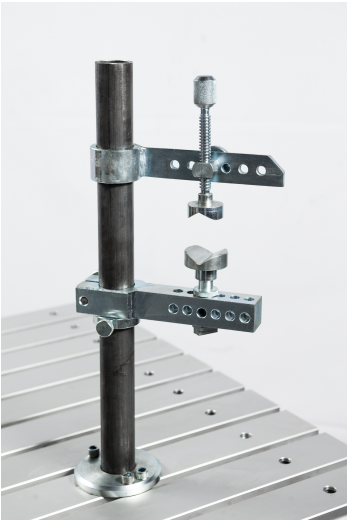
Profile with T-groove double  
sided 1200 mm

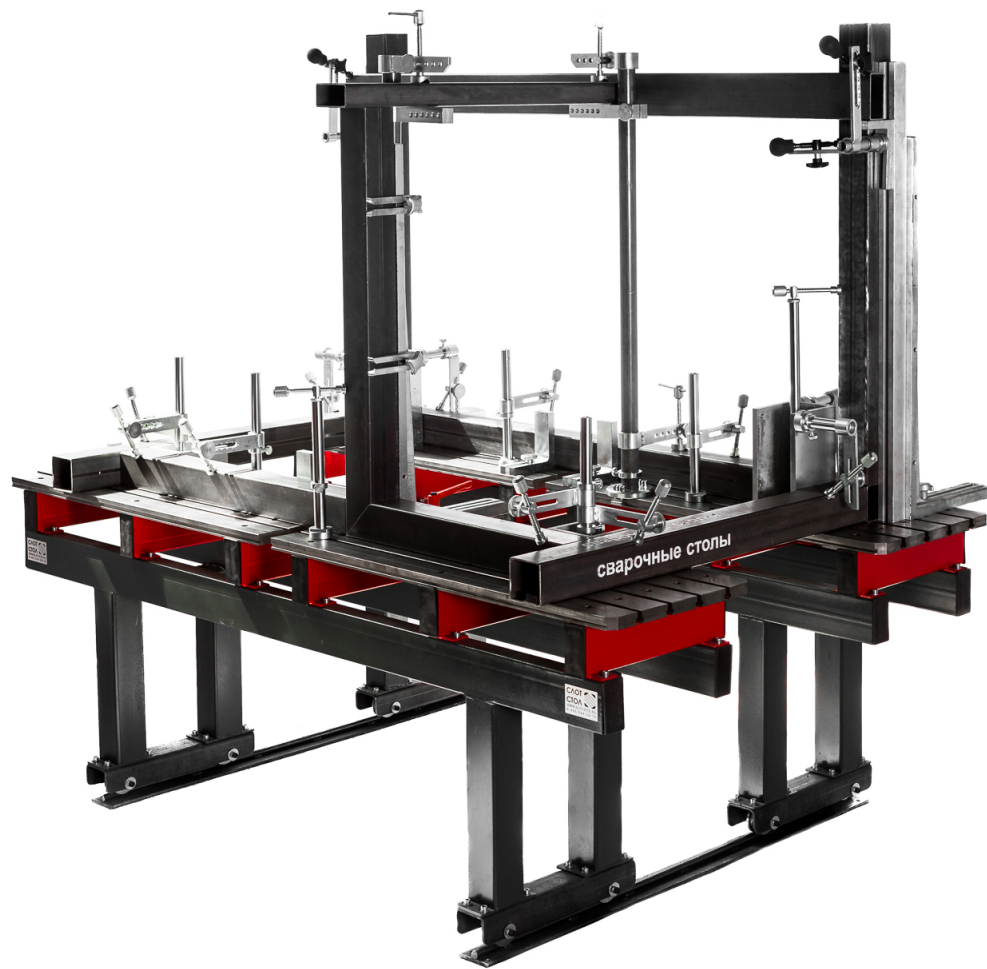


Clamp squares  
height 100, 170 mm



# ASSEMBLY AND WELDING EQUIPMENT





# CONTACTS



---

☎ 8(495) 108 29 74 multichannel

@ sale@slot-stol.ru

🌐 [www.slot-stol.ru](http://www.slot-stol.ru)  
[www.intertechpribor.ru](http://www.intertechpribor.ru)